

HEXOTECH SF

Single flow welded hood
H=400mm and 530mm

COMPLIANT WITH THE
NF EN 16282-2 STANDARD



VENTILATION OF PROFESSIONAL KITCHENS, A SPECIALIST AFFAIR.

HEXOTECH SF

DESIGN / MANUFACTURE

HEXOTECH hoods are manufactured in compliance with the NF EN 16282-2 standard.

HEXOTECH SF hoods are single block from 1070 to 2570mm (3070mm single block available as an option). Longer lengths are created by assembling single block units screwed together, with no visible fixings on the outer faces and in the extraction volume.

HEXOTECH SF hoods are available in 2 heights:

HEXOTECH SF 40: height 400 mm

HEXOTECH SF 53: height 530 mm

The join between the side gutter and the lower extractor band communicates and is welded.

The extractor lower corners are welded, providing perfect leak tightness.

There is a support profile built into each end of the single block unit, making it possible to suspend it from ØM8 threaded rods.

All parts are manufactured from AISI 304 austenitic stainless steel (CN 18- 10), brushed finish 220 grade on both sides with PVC protection.

The front face is made using 12/10ths thickness.

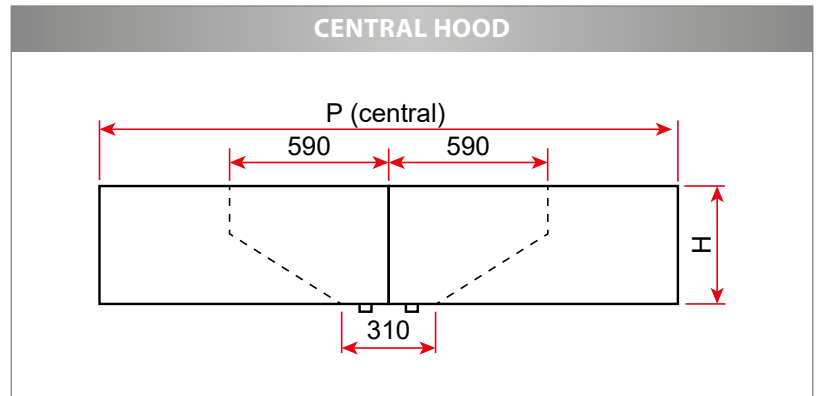
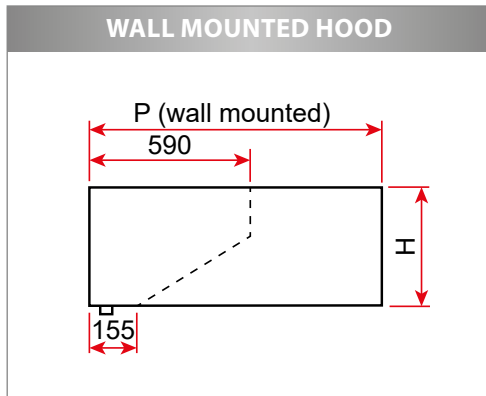
The side casing (ends) are composed of a 35mm tray panel and a double skin. The panel corners are welded.

Baffle filters 398x498x25mm with stainless steel frame and handle (flow of 600m³/h). **Optional HE filters** (flow of 500m³/h). Stainless steel 398x498x25mm neutral plates.

Each single block unit is fitted with a **G3/4 stainless steel purge plug** in its lower part to drain off grease and condensates.

The central hoods are composed of two back to back elements with a central separator, to be assembled together using the supplied hardware.

DIMENSIONS / WEIGHT

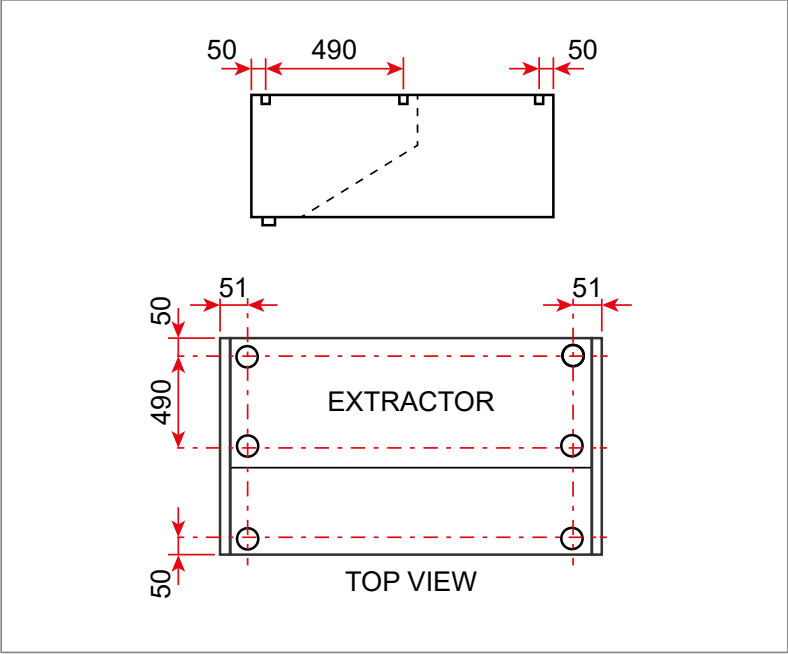


HEXOTECH SF 40					
H (mm)	400	400	400	400	400
Wall mounted					
Model	09	11	13	15	17
D (mm)	915	1120	1240	1445	1650
Weight (kg/m)	46	52	56	62	73
Central					
Model	18	22	26	30	33
D (mm)	1830	2240	2480	2890	3300
Weight (kg/m)	92	104	112	124	146

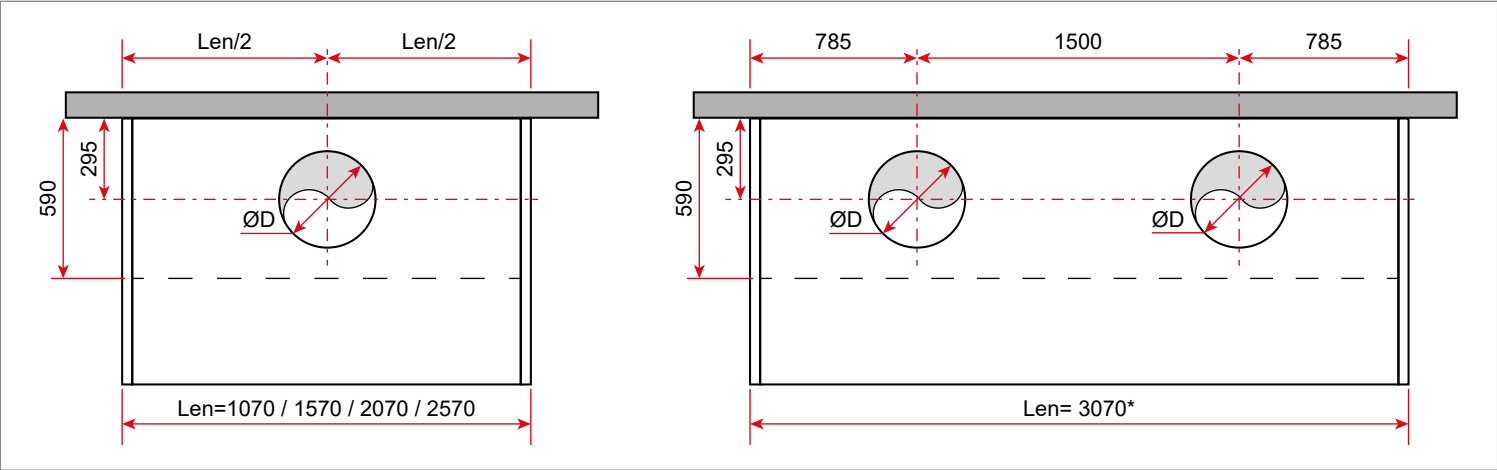
HEXOTECH SF 53					
H (mm)	530	530	530	530	530
Wall mounted					
Model	09	11	13	15	17
D (mm)	915	1120	1240	1445	1650
Weight (kg/m)	57	61	68	74	88
Central					
Model	18	22	26	30	33
D (mm)	1830	2240	2480	2890	3300
Weight (kg/m)	114	122	136	148	176

HEXOTECH SF

FIXING POINTS



CONNECTIONS: Diameter and recommended number of hoops



Length (mm)	1070	1570	2070	2570	3070*
ØD (mm)	315	355	400	400	355

*: Length 3070 mm single block
Drilling and connection hoops as an option